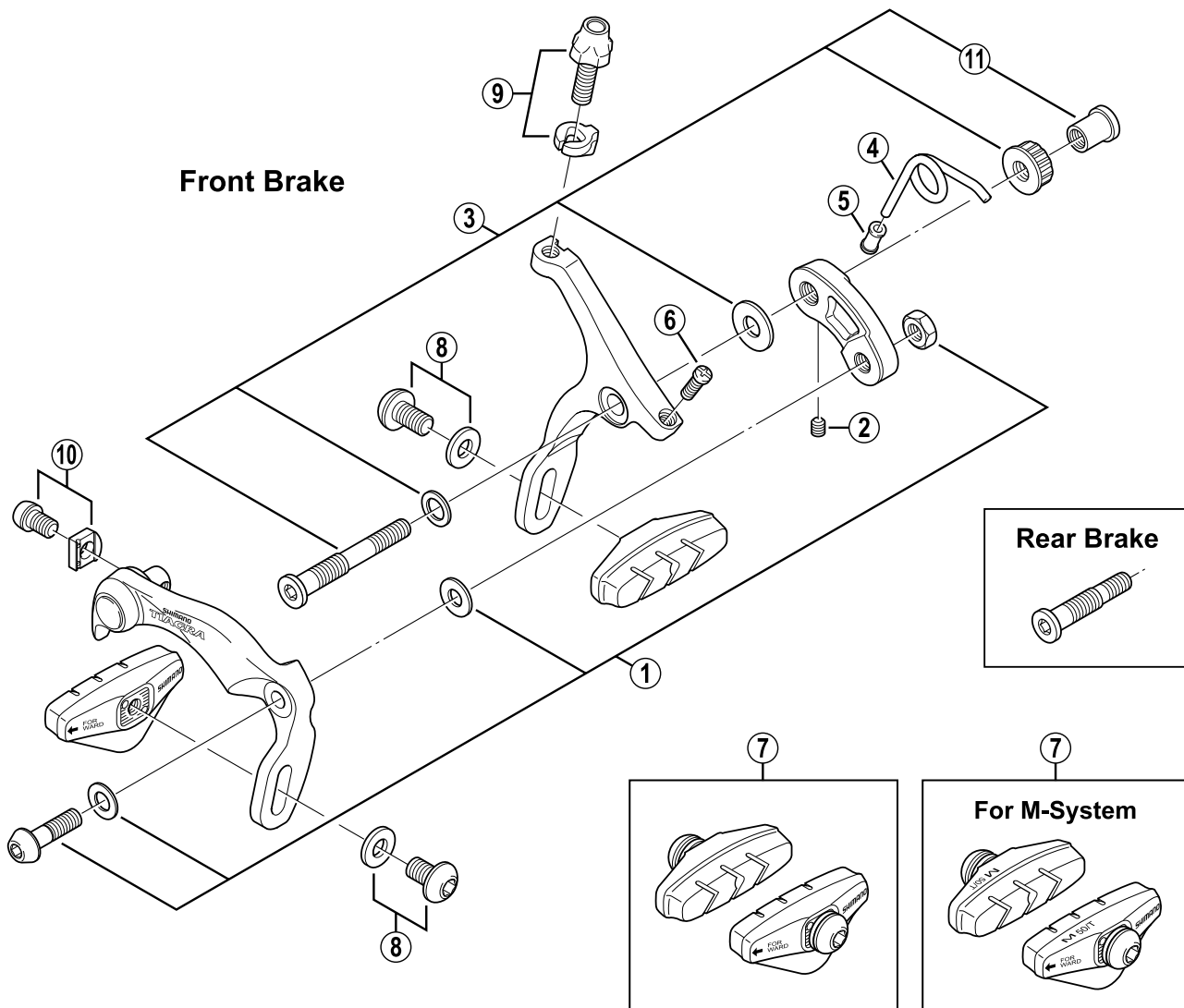


SHIMANO TIAGRA Caliper Brake

BR-4400



Q'TY	ITEM NO.	SHIMANO CODE NO.	DESCRIPTION
	1	Y-8BY 98030	Arm Bolt Unit (M6 x 21.5)
	* 2	Y-884 14000	Set Bolt
	3	Y-8BY 98010	Front Pivot Bolt Assembly {Pivot Bolt: 48.9 mm (1-15/16") / Pivot Nut: 10.5 mm}
		Y-8BY 98020	Rear Pivot Bolt Assembly {Pivot Bolt: 34.2 mm (1-11/32") / Pivot Nut: 10.5 mm}
	4	Y-8BY 06000	Arm Spring
	5	Y-8BY 08000	Spring Guide
	6	Y-81U 10200	EC-Screw (M4 x 11.7)
	7	Y-82A 99010	Brake Shoe Set (5 pairs)
		Y-8BC98100	Brake Shoe Set (10 pairs) for M-System
	8	Y-8BC98040	Shoe Fixing Bolt (M6 x 11.2) & Washer
	9	Y-8BY 98040	Cable Adjusting Bolt (M6 x 19.3) & Clip
	10	Y-8BT 98010	Cable Fixing Bolt (M6 x 9) & Plate
	*	Y-855 75110	Pivot Nut (10.5 mm) for Front/Rear
	* 11	Y-855 75020	Pivot Nut (12.5 mm) for Front
	*	Y-855 74010	Pivot Nut (18.0 mm) for Front