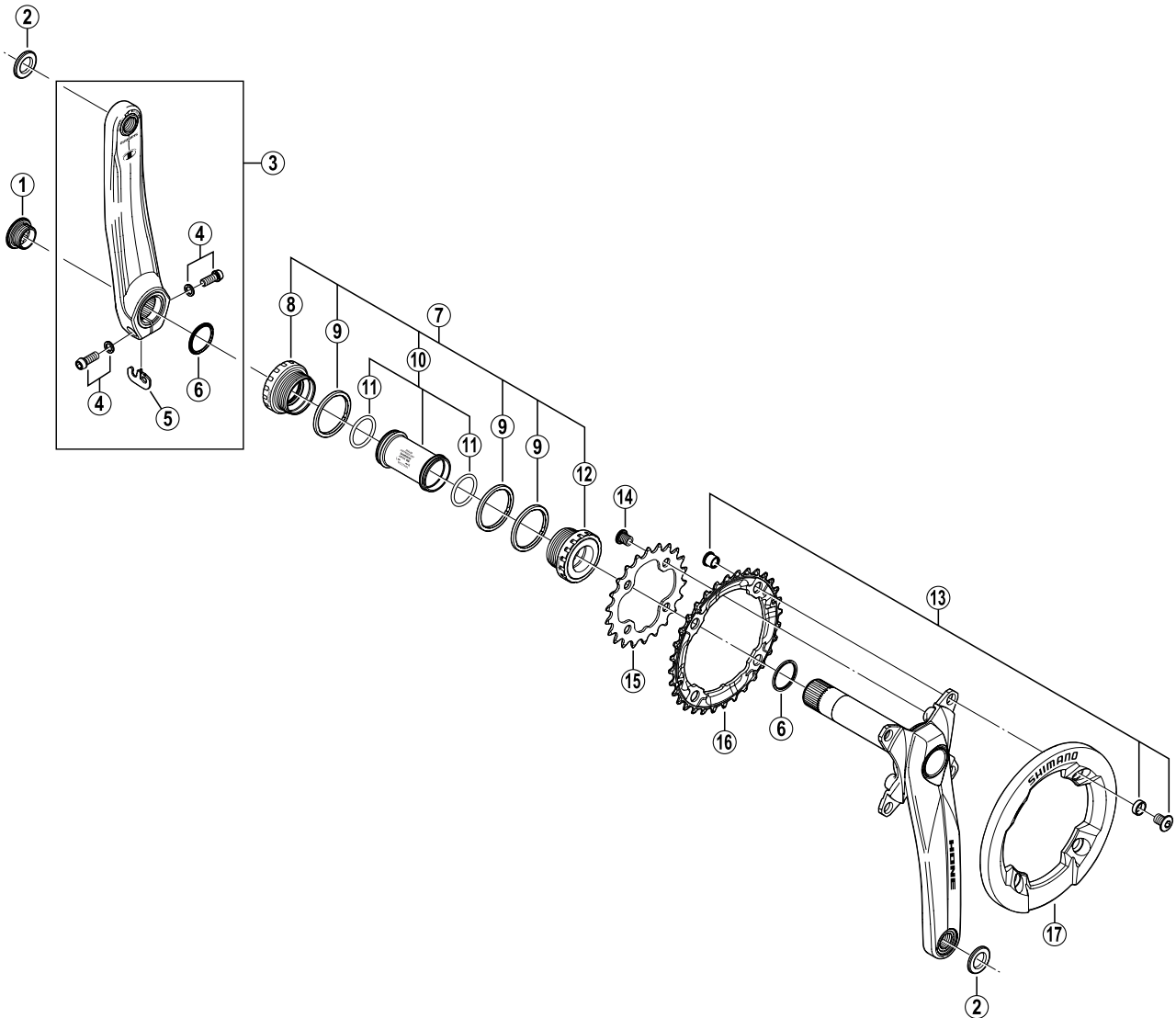


HONE Front Chainwheel FC-M601-2



• Bolt circle diameter: 104 mm...(For outer gear), 64 mm...(For inner gear)

ITEM NO.	SHIMANO CODE NO.	DESCRIPTION
1	Y-1F8 11000	Crank Arm Fixing Bolt
2	Y-1GZ98010	Pedal Washer (2 pcs.)
3	Y-1GZ98020	Left Hand Crank Arm 170 mm
	Y-1GZ98030	Left Hand Crank Arm 175 mm
4	Y-1F8 98010	Clamp Bolt (M6 x 19) & Washer
5	Y-1FU 98120	Plate
6	Y-1F3 16000	Ring
7	Y-1FU 98110	Adapter Unit
8	Y-1FU 98090	Left Hand Adapter (B.C.1.37" x 24T) English Thread
9	Y-1F8 13000	Spacer (2.5 mm)
10	Y-1E5 98210	Inner Cover & O-Ring
11	Y-1TF 21000	O-Ring
12	Y-1FU 98100	Right Hand Adapter (B.C.1.37" x 24T) English Thread
13	Y-1FB 98010	Fixing Bolt Unit (M8 x 10.5 / 4 sets)
14	Y-1FY 98020	Inner Gear Fixing Bolt (M8 x 8.5 / 4 pcs.)
15	Y-1FU 22100	Chainring 22T (Black)
16	Y-1F8 98020	Chainring 32T (Black)
17	Y-1FB 10000	Bash Guard

0507-2511