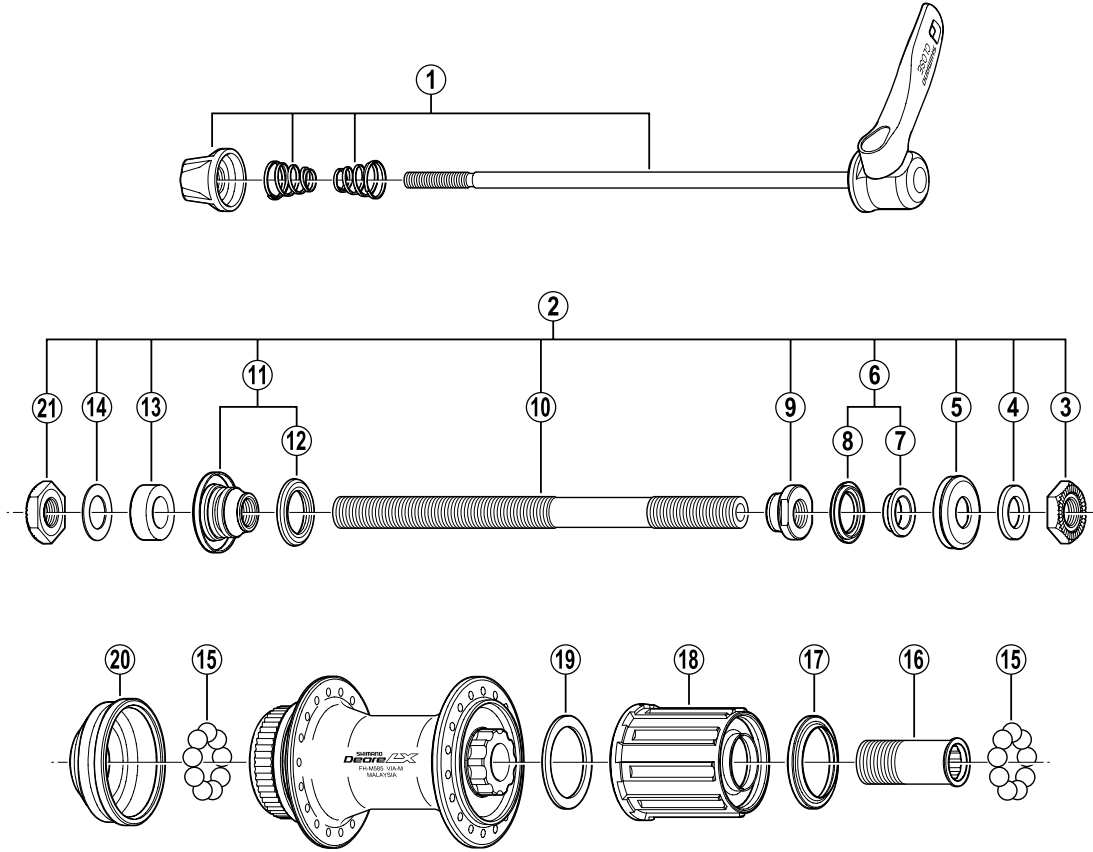


DEORE LX Freehub (8/9-Speed)  
**FH-M585** For Disc Brake



ITEM NO.	SHIMANO CODE NO.	DESCRIPTION
1	<b>Y-3BD98030</b>	Complete Quick Release 168 mm (6-5/8")
	<b>Y-3C7 98010</b>	Complete Quick Release 173 mm (6-13/16")
2	<b>Y-3C7 98030</b>	Complete Hub Axle 146 mm (5-3/4")
3	<b>Y-220 05031</b>	Right Hand Serated Lock Nut 4.0 mm
4	<b>Y-301 07100</b>	Right Hand Washer 1.5 mm
5	<b>Y-3C7 02000</b>	Right Hand Dust Cap
6	<b>Y-32X 98020</b>	Right Hand Axle Spacer & Seal Ring
7	<b>Y-31V 03000</b>	Right Hand Axle Spacer 3.7 mm
8	<b>Y-214 06000</b>	Right Hand Seal Ring
9	<b>Y-3AE 03000</b>	Right Hand Cone M10 x 9 mm
10	<b>Y-30K 01200</b>	Hub Axle 146 mm (5-3/4")
11	<b>Y-3C7 98020</b>	Left Hand Cone (M10 x 16 mm) w/Dust Cover & Seal Ring
12	<b>Y-377 10000</b>	Left Hand Seal Ring
* 13	<b>Y-224 06010</b>	Left Hand Axle Spacer 5.5 mm
* 14	<b>Y-301 06700</b>	Left Hand Washer 0.5 mm
15	<b>Y-000 91310</b>	Steel Ball (1/4") 18 pcs.
16	<b>Y-3BL 03000</b>	Body Fixing Bolt
17	<b>Y-3C7 03000</b>	Sub Unit Rubber Seal
18	<b>Y-3C0 98010</b>	Complete Freewheel Body w/Right Hand Dust Cap
19	<b>Y-375 04000</b>	Freewheel Body Washer
20	<b>Y-24Z 02000</b>	Rotor Mount Cover
* 21	<b>Y-220 05011</b>	Left Hand Serated Lock Nut 4.5 mm

Over Lock Nut Dimension: 135 mm (5-5/16")

0408-2346A

Specifications are subject to change without notice.

**SHIMANO**