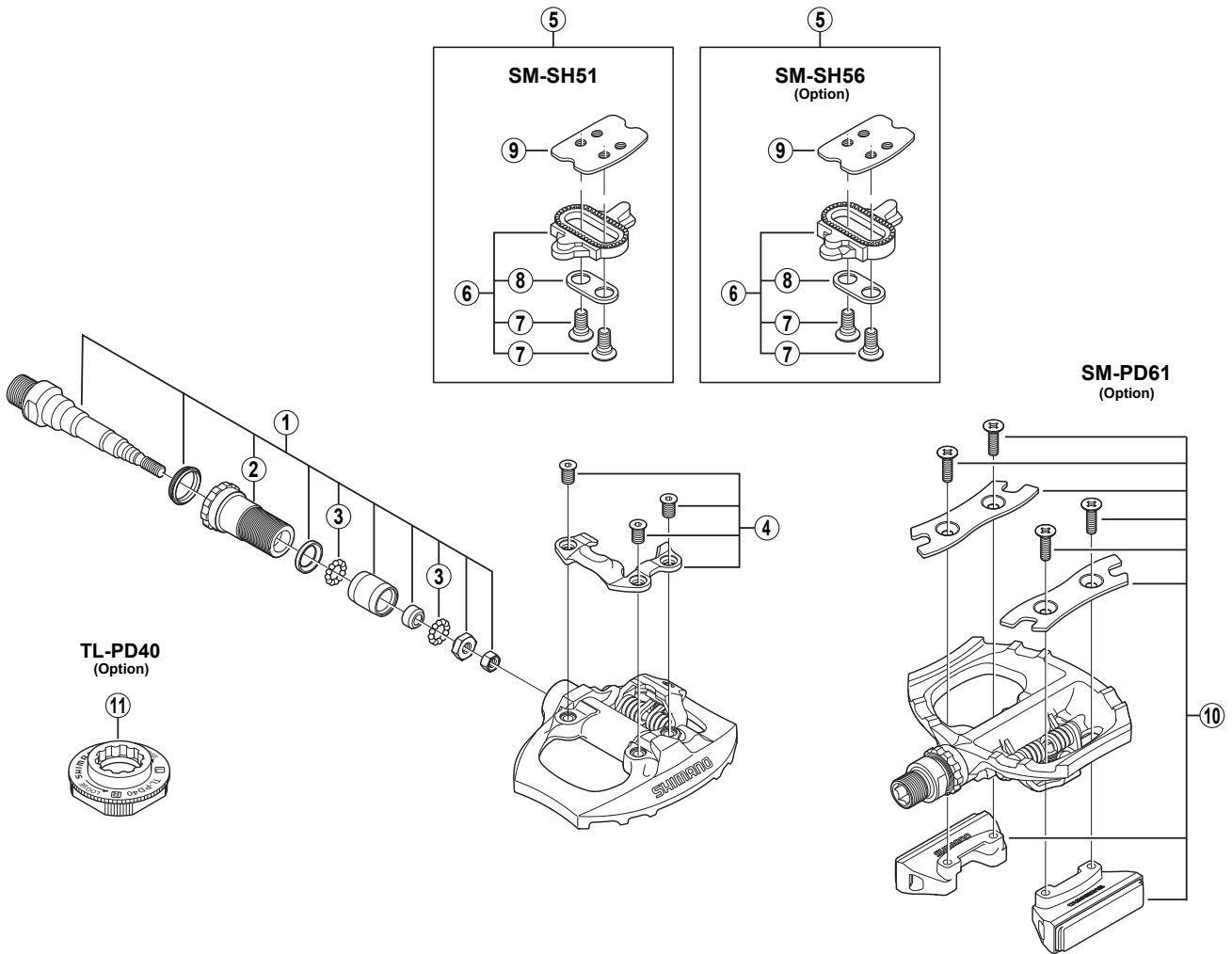


# SPD Pedals PD-A530



PD-A530

ITEM NO.	SHIMANO CODE NO.	DESCRIPTION	INTERCHANGEABILITY
1	Y-45R 98010	Pedal Axle Assembly (Right / B.C.9/16" x 20T.P.I.)	
	Y-45R 98020	Pedal Axle Assembly (Left / B.C.9/16" x 20T.P.I.)	
2	Y-43Z 13100	Lock Bolt (Right)	A
	Y-43Z 14100	Lock Bolt (Left)	A
3	Y-41N 98030	Steel Ball (3/32") 62 pcs.	A
4	Y-41S 98050	Body Cover (Right) & Fixing Bolts	A
	Y-41S 98060	Body Cover (Left) & Fixing Bolts	A
5	Y-424 98200	SM-SH51 Cleat Set (Single Release Mode / Pair)	A
	Y-41S 98090	SM-SH56 Cleat Set (Multiple Release Mode / Pair)	A
6	Y-424 98201	SM-SH51 Cleat Set w/o Cleat Nut (Single Release Mode / Pair)	A
	Y-41S 98100	SM-SH56 Cleat Set w/o Cleat Nut (Multiple Release Mode / Pair)	A
7	Y-417 04030	Cleat Fixing Bolt (1 pc.)	A
8	Y-424 23000	Cleat Adapter (1 pc.)	A
9	Y-40N 01000	Cleat Nut (1 pc.)	A
10	Y-45Z 98010	SM-PD61 Reflector Unit (Pair)	
	Y-45Z 98020	SM-PD61 Reflector Unit (AS/Pair)	
11	Y-42A 09000	TL-PD40 Special Tool	A

A: Same parts.

B: Parts are usable, but differ in materials, appearance, finish, size, etc.

Absence of mark indicates non-interchangeability.

0707-2743

Specifications are subject to change without notice.

# SHIMANO