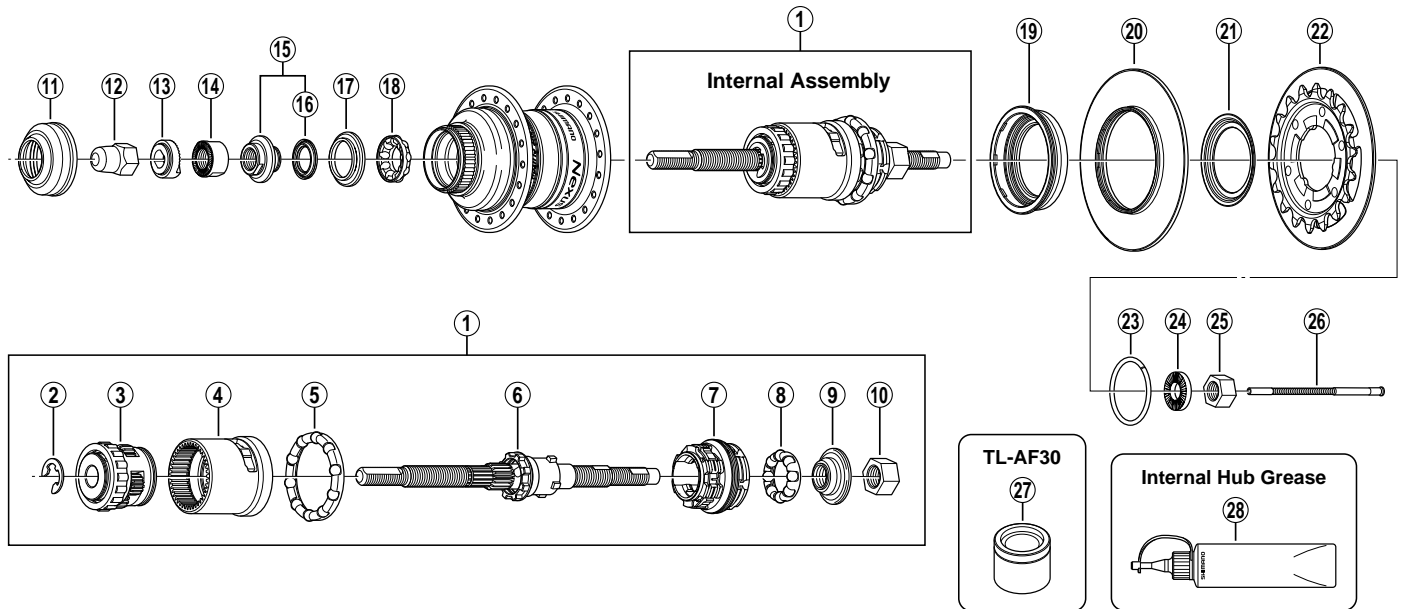


# NEXUS 3-Speed Internal Hub SG-3D55



SG-3R40  
SG-3R55  
SG-S500

ITEM NO.	SHIMANO CODE NO.	DESCRIPTION	INTERCHANGEABILITY
1	Y-36U 98010	Internal Assembly (Axle Length 192.6 mm)	
2	Y-33Y 19000	Stop Ring ( $\phi$ 9.6 mm)	A A
3	Y-35E 98020	Carrier Unit	A
4	Y-35H 90300	Ring Gear Unit	A
5	Y-33R 90220	Ball Retainer K (7/32" x 10)	A A
6	Y-36U 98020	Axle Unit (Axle Length 192.6 mm)	
7	Y-33S 90200	Driver Unit	A
8	Y-33R 90210	Ball Retainer J (7/32" x 8)	A A
9	Y-33R 90500	Right Hand Cone w/Dust Seal	A
10	Y-325 30120	Right Hand Lock Nut (9.9 mm)	B
11	Y-24Z 02000	Rotor Mount Cover	A
12	Y-314 14010	Cap Nut (3/8")	A
13	Y-34R 85000	Non-turn Washer 8L (Dark Green)	A
	Y-33Z 20200	Non-turn Washer 2 (Yellow)	A
14	Y-35Z 19000	Left Hand Serated Lock Nut (10.7 mm)	A
15	Y-35Z 98060	Left Hand Cone w/Dust Cap & Seal Ring	A
16	Y-377 10000	Seal Ring	A
17	Y-32T 08100	Left Hand Inner Dust Cap	A
18	Y-36U 98030	Ball Retainer (7/32" x 9)	A
19	Y-36U 09000	Right Hand Dust Cap A	
20	Y-36U 10000	Chain Guard	
21	Y-33R 52001	Right Hand Dust Cap B	A
22	Y-1ZN 98010	Sprocket Wheel 18T w/Guard Plate (CS-S500)	A
	Y-1ZN 98020	Sprocket Wheel 20T w/Guard Plate (CS-S500)	A
23	Y-321 20010	Snap Ring C	A A
24	Y-220 06010	Washer (3.2 mm)	B A
25	Y-200 03000	Hub Nut (9 mm)	A
26	Y-33S 98290	Push Rod (90.75 mm)	A
27	Y-708 11000	TL-AF30 Left Hand Inner Dust Cap Installation Tool	A
28	Y-041 20800	Internal Hub Grease (Net. 100g)	A

A: Same parts.

B: Parts are usable, but differ in materials, appearance, finish, size, etc.

Absence of mark indicates non-interchangeability.

0708-2723