

General Safety Information

WARNING

- The WH-M776 front hub is not designed for off-road bicycle riding and extreme mountain bike riding, that are represented in part by North Shore style riding, "trials riding", or urban stunt riding. However, depending on the riding condition, The hub axle could develop a crack, which may result in failure of the hub axle. This can lead to an accident that could result in serious injury or even death. Before riding, you should carefully check your hubs to make sure that there are no cracks in the axles, and if you find any sign of a crack or any other unusual condition, do NOT use the bicycle.
- The securing method and tightening torque for the front wheel both vary depending on the type of front suspension fork being used. When installing the front wheel to the front suspension fork, always be sure to follow the directions given in the Service Instructions for the front suspension fork. If the directions are not followed, the front wheel may fall out of the front suspension fork and serious injury may result.
- Check that the wheels are fastened securely before riding the bicycle. If the wheels are loose in any way, they may come off the bicycle and serious injury may result.
- The wheel is designed for cross-country riding. Do not use it for downhill riding, otherwise the wheel may become bent or otherwise damaged, and accidents may occur as a result.
- If the quick release mechanism is not used correctly, the wheel may come off the bicycle and serious injury could result. Read the Service Instructions for the quick release mechanism thoroughly before use.
- These wheels are designed exclusively for use with disc brakes. Do not use these wheels with rim brakes.
- Be sure to carefully read the Service Instructions for the disc brakes also.
- Obtain and read the service instructions carefully prior to installing the parts. Loose, worn, or damaged parts may cause injury to the rider. We strongly recommend only using genuine Shimano replacement parts.
- Read these Technical Service Instructions carefully, and keep them in a safe place for later reference.

CAUTION

- Do not use rim tape. Rim tape may make it difficult to remove and install the tire, and the tire or tube may become damaged or the tires may suddenly puncture and come off, and severe injury may result.

CAUTION

- Use genuine Shimano spokes, nuts, plugs and washers, otherwise damage to the rim and hub unit may result.
- The air pressure should be within the range of 200-400 kPa (29-58 psi).
- Be careful not to overtighten the plugs when adjusting the spoke tensions. If the plugs are overtightened, damage to the rim may result. (We recommend that you ask authorized bicycle dealers to make the adjustments.)
- Puncture repair agents and puncture prevention agents may corrode the rims, so only use neutral-type agents.
- When using the special tool (TL-FC32) to remove and install the rotor mounting ring, be careful not to touch the outside of the rotor with your hands. Wear gloves to protect your hands from getting cut.
- Do not turn the rotor while the special tool (TL-FC32) is installed to it. If the rotor becomes bent, the rotor and brake pad may interfere with each other and generate noise. In addition, it may cause the braking force to drop.

Note

- If the wheel becomes stiff and difficult to turn, you should lubricate it with grease.
- Do not apply any oil to the inside of the hub, otherwise the grease will come out.
- Special spoke wrenches are available as optional accessories.
- We recommend that you ask authorized bicycle dealers to adjust the spoke tensions if there is any initial play in the spokes and after the first 1,000 km of riding.
- Do not use detergents or chemical cleaners to wipe the wheel, otherwise they may cause the air sealant that has been applied to the joints in the rim to peel off.
- Do not use detergent or other chemicals when wiping the wheel, otherwise it may cause the sticker on the rim to peel off.
- Reflectors are also sold separately. Please ask your bicycle dealer for details.

Model number	Specification	Color
RR-550-WUW SW W/O BRACKET	JIS / CPSC	White
RR-550-WUA SW W/O BRACKET	AS	Amber
RR-317-WUA SW W/O BRACKET	DIN	Amber

- Spoke protectors are also sold separately. Please ask your bicycle dealer for details.

CP-WH14	CS-M760 (11-34T, 12-34T), CS-M970
CP-WH15	CS-M760 (11-32T), CS-M770

- For maximum performance we highly recommend Shimano lubricants and maintenance products.
- Parts are not guaranteed against natural wear or deterioration resulting from normal use.

Technical Service Instructions

SI-4DD0A-001

WH-M776

Wheel

In order to realize the best performance, we recommend that the following combination be used.

Chain	CN-7701 / CN-HG93 / CN-HG73
Cassette sprocket	CS-M770 / CS-M970
Rotor	SM-RT78 / SM-RT97

Specifications

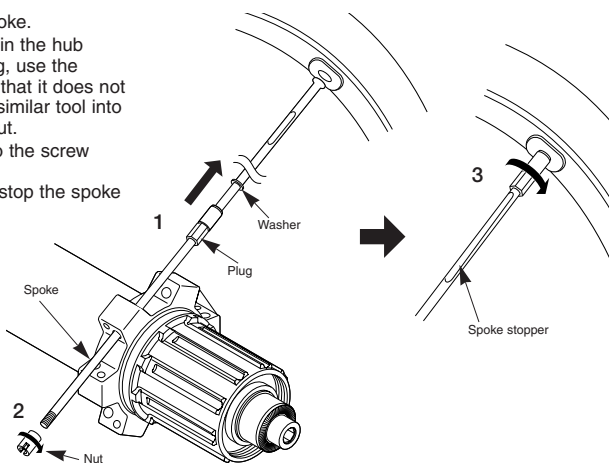
Speeds	9	Rim size	26"
No. of spokes	24	Applicable tire size	26 x 1.95 ~ 2.5
Rim width	26.4 mm	Applicable brakes	Disc brake

Replacing the spokes

- Pass the washer and plug over the spoke.
- After inserting the spoke into the hole in the hub flange, tighten the nut. When installing, use the spoke stopper to secure the spoke so that it does not turn, and then insert a screwdriver or similar tool into the groove in the nut to screw in the nut.
- Turn the plug clockwise to screw it into the screw hole in the rim. At this time, use the spoke stopper to stop the spoke from turning.

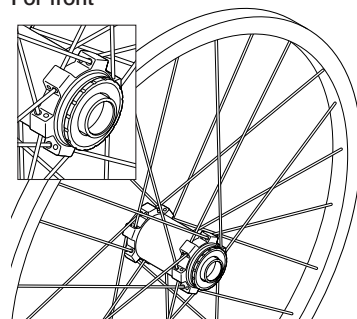
Note:

- If the washer is not installed, it will not be possible to adjust the spoke tension, so be sure to include the washer.
- Tighten the nut as far as the edges of the thread.

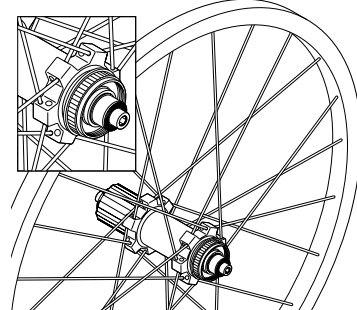


Spoke lacing

Lace the spokes as shown in the illustration.



For front

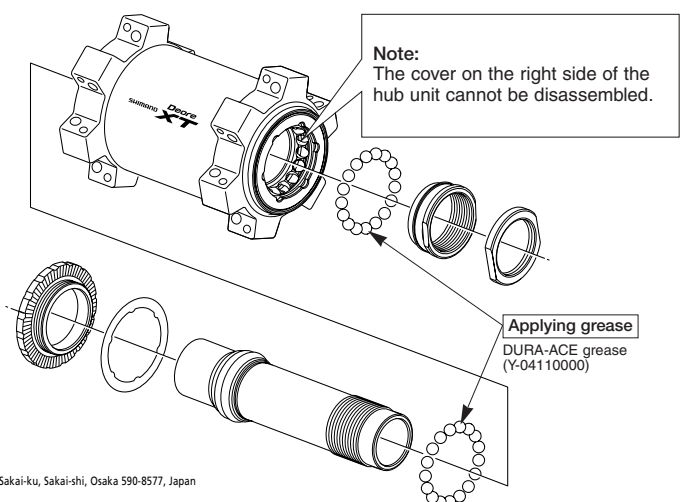


Spoke tension value			
For front		For rear	
Right side	Left side	Right (sprocket) side	Left side
600 - 1000 N (135 - 225 lbf)	900 - 1350 N (202 - 304 lbf)	900 - 1350 N (202 - 304 lbf)	600 - 1000 N (135 - 225 lbf)

* These values should be used as a guide only.

Maintenance

These units can be disassembled as shown in the illustrations. Grease should be applied to each part at periodic intervals.

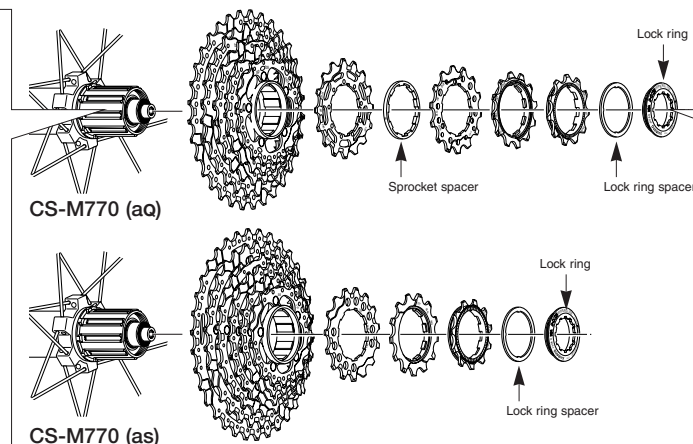
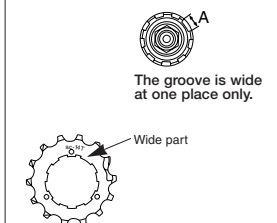


Note:
The cover on the right side of the hub unit cannot be disassembled.

Applying grease
DURA-ACE grease
(Y-04110000)

Installation of the HG sprockets

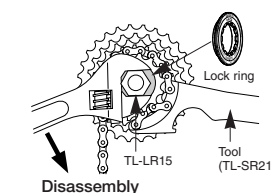
For each sprocket, the surface that has the group mark should face outward and be positioned so that the wide parts of the gear projections on each sprocket and the A part (where the groove width is wide) of the freewheel body are aligned.



For installation of the HG sprockets, use the special tool (TL-LR15) to tighten the lock ring.

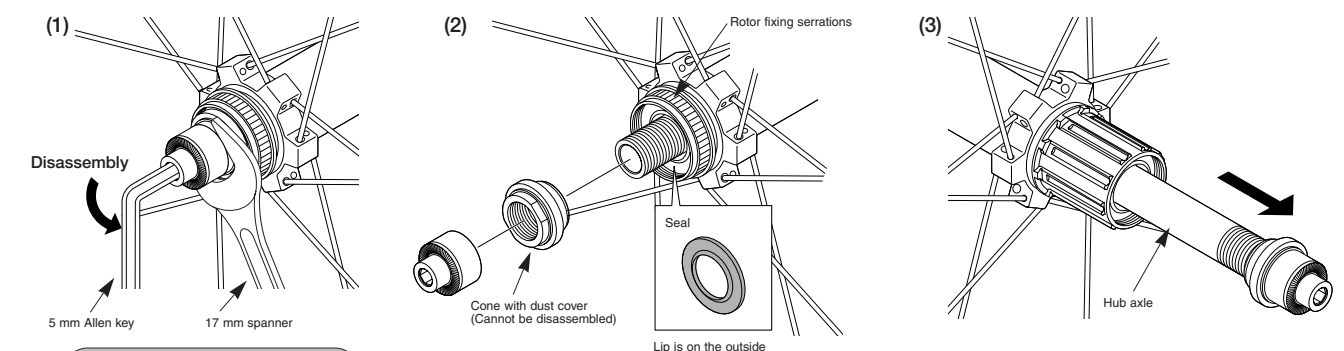
Tightening torque:
30 - 50 N·m {261 - 434 in. lbs.}

To replace the HG sprockets, use the special tool (TL-LR15) and TL-SR21 to remove the lock ring.



Replacement of the freewheel body

- First, pull out the hub axle by following the procedure shown in the illustration. The double-lock section at the freewheel side cannot be disassembled.



Left side Tightening torque:
15 - 20 N·m {132 - 172 in. lbs.}

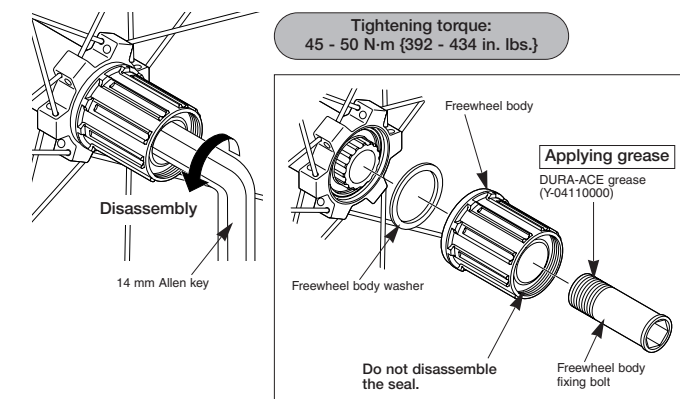
Note:

- When removing and installing the seal, do it very carefully so that the seal does not become bent. When reinstalling the seal, make sure that it is facing the right way, and insert it as far as it will go.
- Do not disassemble the dust-proof cover which is crimped onto the cone.

- After removing the hub axle, remove the freewheel body fixing bolt (inside the freewheel body), and then replace the freewheel body.

Note:

- When replacing the freewheel body, replace the freewheel body fixing bolt at the same time. Be sure to apply grease to the thread of the freewheel body fixing bolt, otherwise looseness or sticking may occur. Do not attempt to disassemble the freewheel body, because it may result in a malfunction.



Tightening torque:
45 - 50 N·m {392 - 434 in. lbs.}

Applying grease
DURA-ACE grease
(Y-04110000)

Do not disassemble the seal.

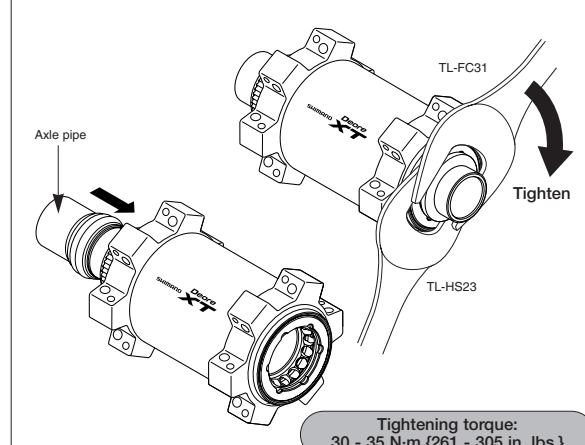
Installation of the rotor

CAUTION

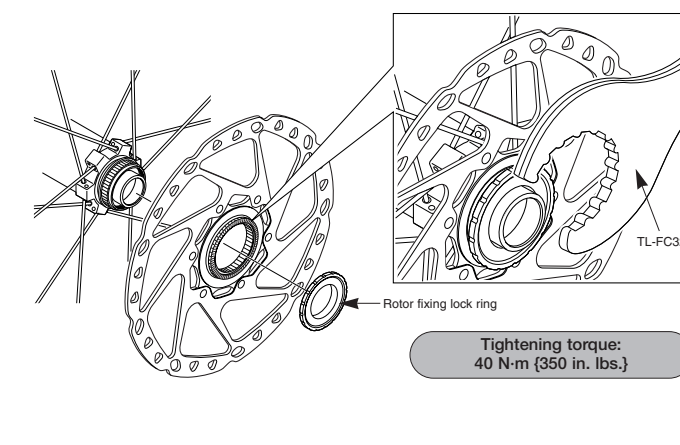
When using the special tool (TL-FC32) to remove and install the rotor mounting ring, be careful not to touch the outside of the rotor with your hands. Wear gloves to protect your hands from getting cut.

<Assembly>

Install the axle pipe, and then use the special tools (TL-HS23 and TL-FC31) to tighten the lock nut so as to double-lock the mechanism as shown in the illustration. Use the TL-HB80 to adjust the hub rotation performance.



Tightening torque:
30 - 35 N·m {261 - 305 in. lbs.}



Tightening torque:
40 N·m {350 in. lbs.}

SHIMANO

SHIMANO AMERICAN CORPORATION
One Holland, Irvine, California 92618, U.S.A. Phone: +1-949-951-5003

SHIMANO EUROPE B.V.
Industrieweg 24, 8071 CT Nunspeet, The Netherlands Phone: +31-341-272222

SHIMANO INC.
3-77 Oimatsu-cho, Sakai-ku, Sakai-shi, Osaka 590-8577, Japan

Please note: specifications are subject to change for improvement without notice. (English) © Mar. 2007 by Shimano Inc. XBC IZM Printed in Malaysia.