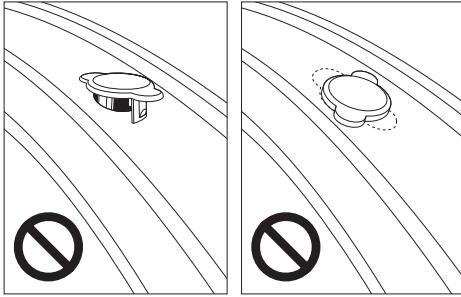


# General Safety Information

## ⚠ CAUTION

- Make sure all the spoke holes are covered with the accessory spoke hole plugs. If some of the spoke holes are not covered or the plug is not installed correctly, the tube may suddenly puncture and the tire may come off while riding and severe injury may result.



- Do not use the spoke hole plugs with any wheel other than a fully assembled manufactured wheel by Shimano. Plugs cannot be installed correctly with other wheels and if you try to install them, the tube may suddenly puncture and the tire may come off while riding and severe injury may result.

- When using the spoke hole plugs, the accessory protective valve hole sheets must be installed. If the valve hole sheets are not installed correctly the tube may suddenly puncture and the tire may come off while riding and severe injury may result.
- Do not re-use plugs after they have been removed. Used parts may not provide enough fixing force and they may come off when installing the tires. The tube may puncture and the tire may come off while riding and severe injury may result.
- This product was developed for road racing bicycles. If used with mountain bike or trekking bike wheels, the tube may suddenly puncture and the tire may come off while riding and severe injury may result.

## Note

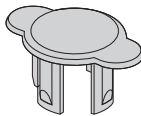
- Check that the beads of the tires are sitting evenly on the rims. If they are not sitting evenly, the tires may come off or burst when they are being inflated.
- If using the spoke hole plugs, rim tape is not needed. Do not use rim tape together with spoke hole plugs.

## Technical Service Instructions

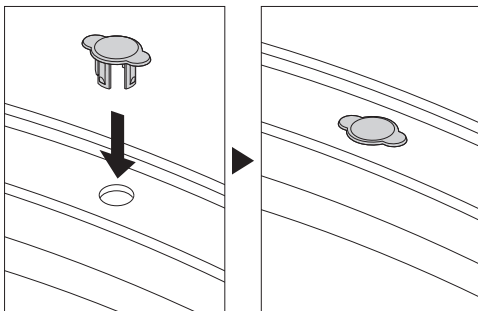
SI-0058A-001

# Spoke hole plugs

Spoke hole plugs are used in order to protect tire tubes with high pressures.

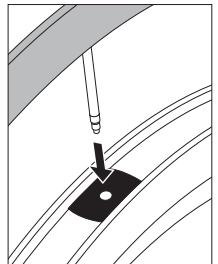
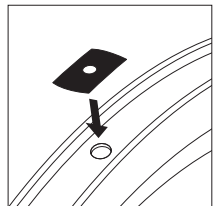


- Insert the spoke hole plugs into the spoke holes so that they are straight and not at an angle, and push them in firmly as far as they will go until the tops are flush with the base of the rim.
- Make sure that they face the correct way when inserted. (Refer to the illustration.)



## <Valve hole sheet>

1. Insert the valve hole sheet with the printed surface facing upward so that the center of the hole is aligned with the valve hole and so that the sheet is flush with the base of the rim.
2. Insert the valve of the tube into the valve hole. The hole in the valve sheet is smaller than the size of the valve. Bend and curve the sheet while firmly inserting the valve.
3. Install the tire and tube by following the normal procedure.



## SHIMANO

SHIMANO AMERICAN CORPORATION  
One Holland, Irvine, California 92618, U.S.A. Phone: +1-949-951-5003

SHIMANO EUROPE B.V.  
Industrieweg 24, 8071 CT Nunspeet, The Netherlands Phone: +31-341-272222

SHIMANO INC.  
3-77 Oimatsu-cho, Sakai-ku, Sakai-shi, Osaka 590-8577, Japan

Please note: specifications are subject to change for improvement without notice. (English)  
© Sep. 2007 by Shimano Inc. XBC IZM Printed in Malaysia.