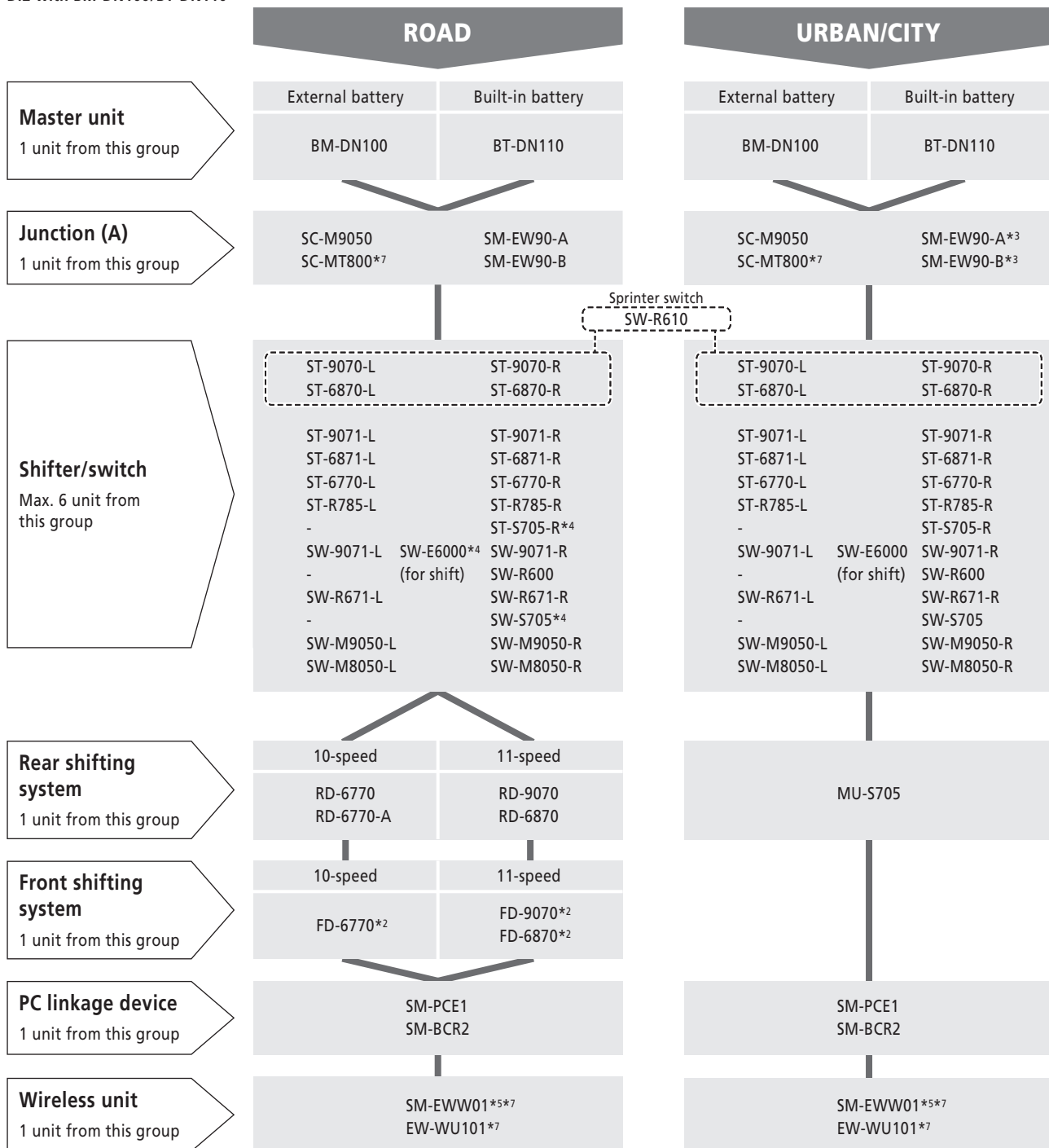
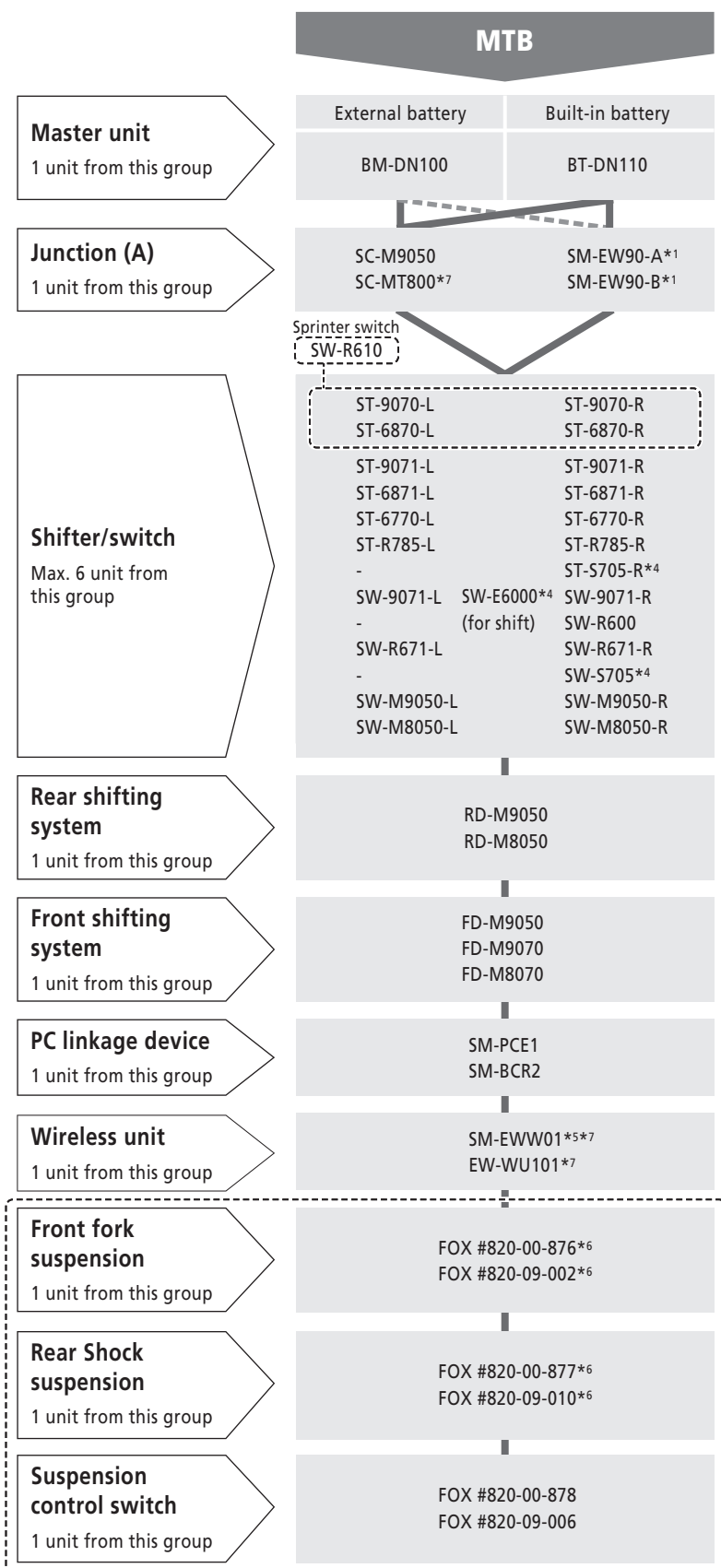


# E-TUBE compatibility chart

When any device which is not shown in E-TUBE compatibility chart is connected, all components don't work. Confirm the E-TUBE compatibility chart.

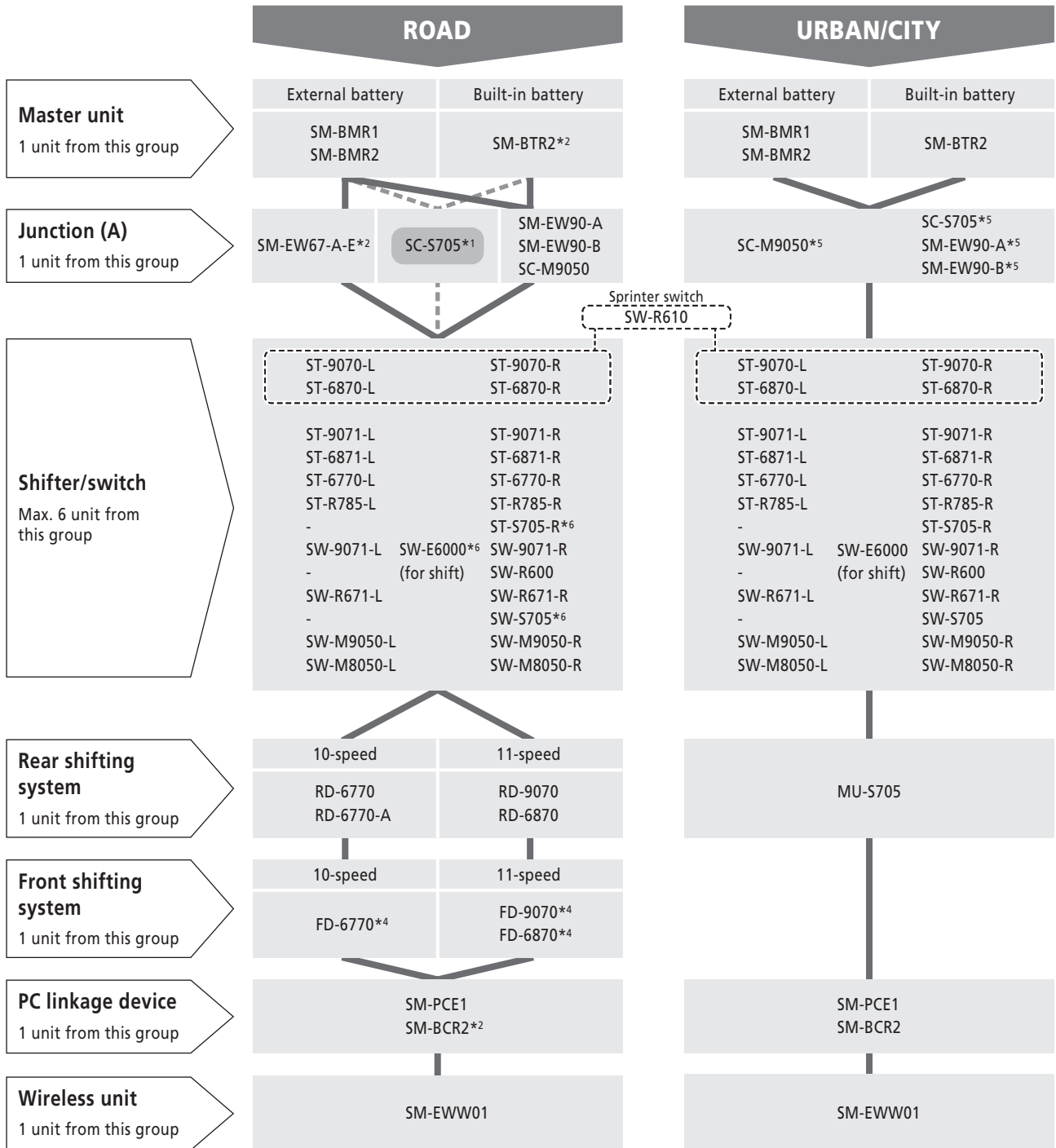
Di2 with BM-DN100/BT-DN110

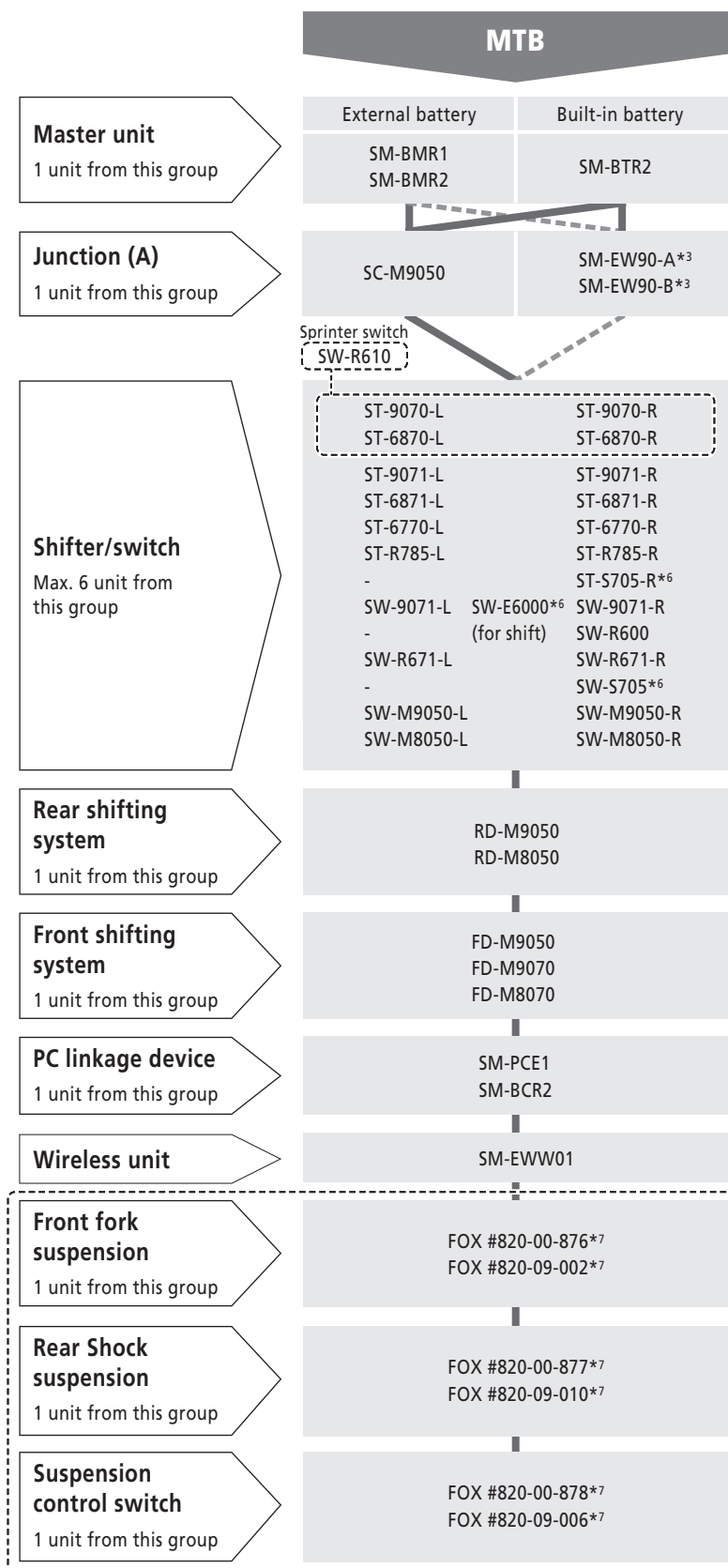




**Limitation of function with BM-DN100/BT-DN110 -----**

- \*1 SC-M9050, SC-M9051 or SC-MT800 is required for synchronized shift.
- \*2 Synchronized shift is available only in MTB category.
- \*3 Shifting adjustment mode for MU-S705 is not supported. (need E-tube Project to adjust)
- \*4 Only for rear shifting.
- \*5 Not possible to connect to E-tube Project for tablet, as no support for Bluetooth LE.
- \*6 A designated control switch and/or the combination SW-M9050/M8050-L with SC-M9050/SC-M9051/SC-MT800 is required to operate.
- \*7 The system accepts just 1 unit with wireless chip. (doesn't work if plural units with wireless chip are connected)





**Limitation of function with SM-BMR1/SM-BMR2/SM-BTR2** -----

\*1 SC-S705

- Front derailleur position will not appear on display.
- Recovery from Rear derailleur protection function is not available.
- Front / Rear derailleur adjustment mode is not available. Use E-TUBE PROJECT software.
- SC-S705 has only 1 E-TUBE port for ST / SW.
- SC-S705 may not turn on the display by front shifting switch.

\*2 SM-BCR2 requires any device which has charging connector.  
SM-EW67-A-E (Junction (A)) is not compatible with SM-BCR2 and SM-BTR2.

\*3 SC-M9050 is required for synchronized shift.

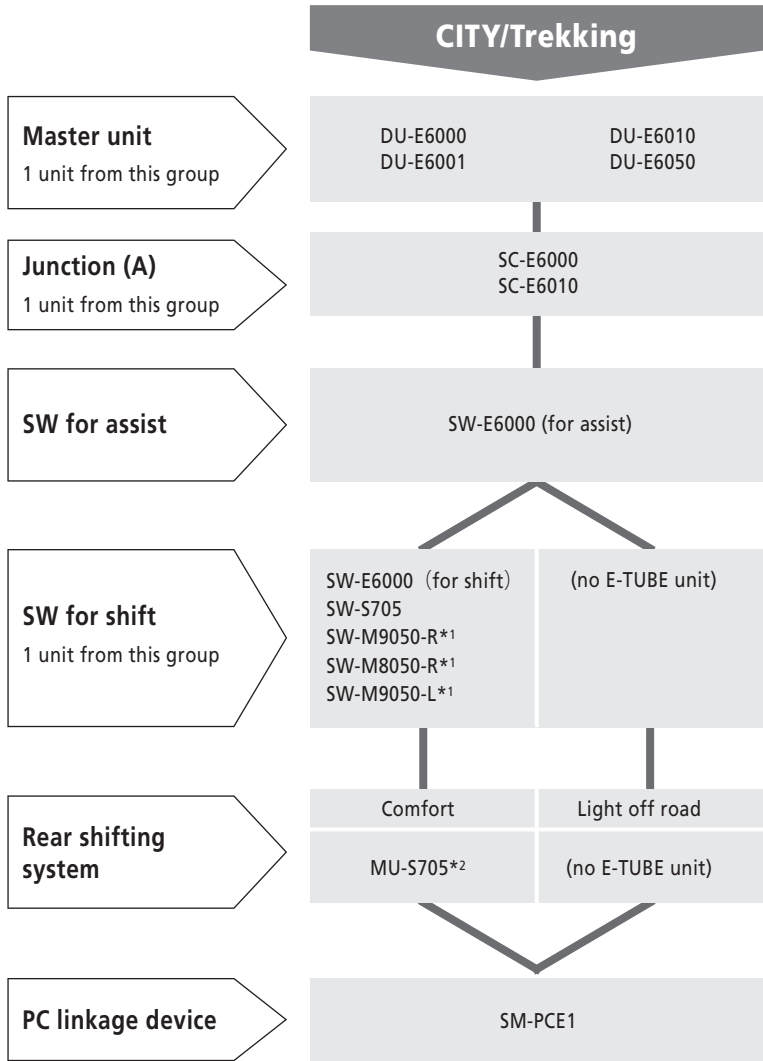
\*4 Synchronized shift is available only in MTB category.

\*5 Shifting adjustment mode for MU-S705 is not supported. (need E-tube Project to adjust)

\*6 Only for rear shifting

\*7 A designated control switch is needed operate the suspension system.

STEPS



**Limitation of function -----**

\*1 For manual shifting only.

\*2 Full automatic shift is available only with 8 speed system.

Other E-BIKE system

