

SHIMANO DYNAMIC LAYERING

HELP [reset](#)

COLLECTIONS

- S-PHYRE
 - PERFORMANCE
- COLLECTION SELECT BUTTON

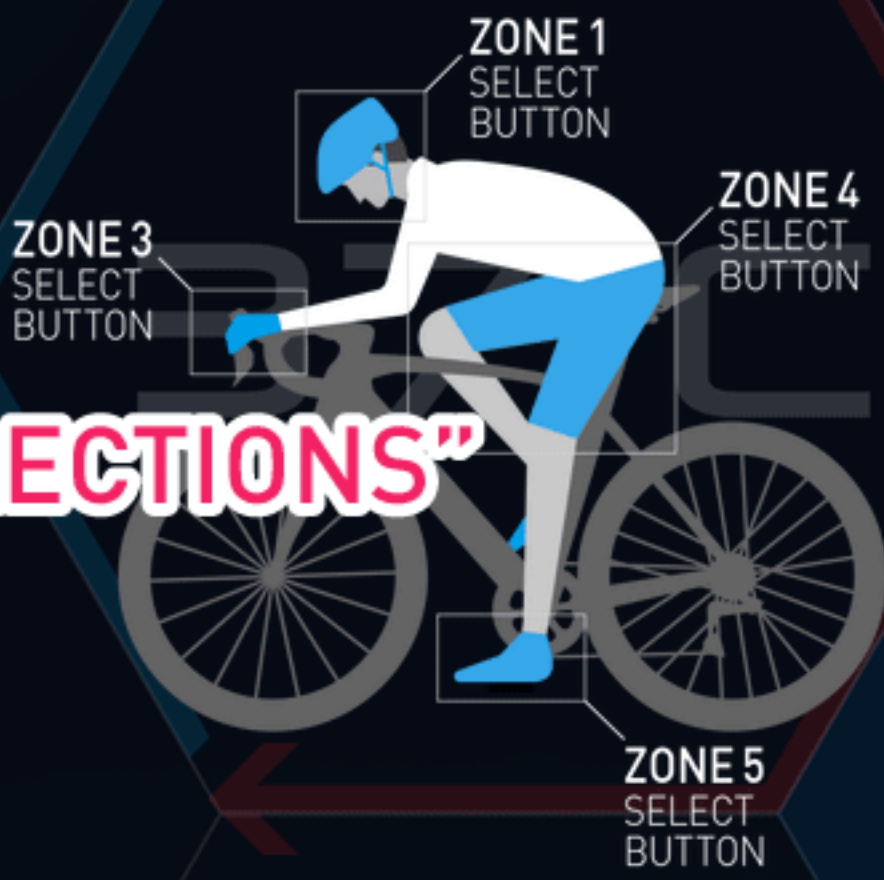
CONDITIONS

- HOT
 - WARM
 - VARIABLE
 - 15°C/59°F ~ 10°C/50°F
 - 10°C/50°F ~ 5°C/41°F
 - COOL
 - 5°C/41°F ~ 0°C/32°F
 - COLD
 - 0°C/32°F ~ -5°C/23°F
 - 5°C/23°F ~ -10°C/14°F
- CONDITION SELECT BUTTON

5 BODY ZONES 5 BODY ZONES BUTTON

FABRIC TECHNOLOGIES FABRIC TECHNOLOGIES BUTTON

37°C
TEMPERATURE
REGULATION



1. Select "COLLECTIONS"

HELP

reset

COLLECTIONS

S-PHYRE

PERFORMANCE

CONDITIONS

HOT

WARM

VARIABLE

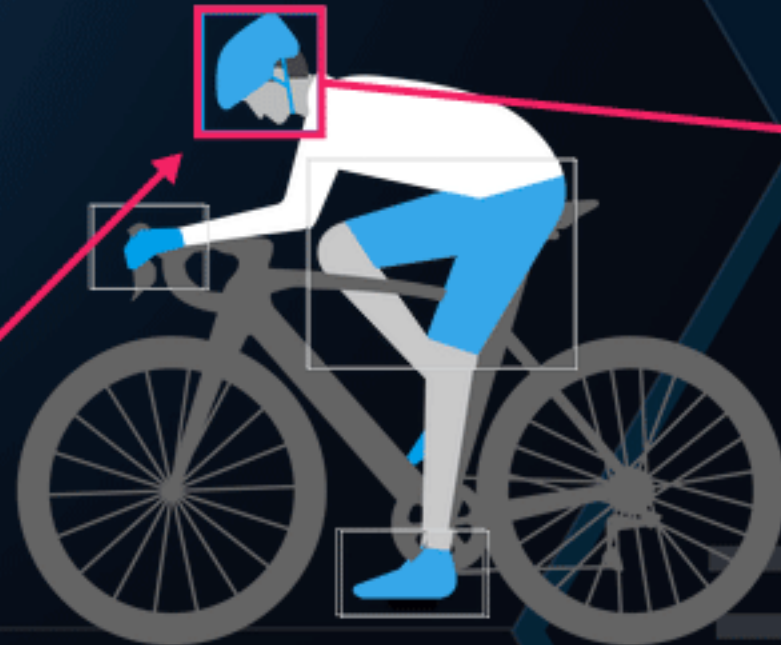
15°C/59°F~10°C/50°F
10°C/50°F~5°C/41°F

COOL
5°C/41°F~0°C/32°F

COLD
0°C/32°F~-5°C/23°F

5 BODY ZONES

FABRIC TECHNOLOGIES



ZONE 1

accessory



THERMAL SKULL CAP



THERMAL HEADBAND

2. Select "CONDITIONS"
And Products appears.

layer 1



S-PHYRE
BASE LAYER

> Details

layer 2



S-PHYRE
SHORT SLEEVE
JERSEY



S-PHYRE
ARM
WARMER



S-PHYRE
LEG
WARMER

layer 3



S-PHYRE
WIND VEST

HELP

reset

COLLECTIONS

S-PHYRE

PERFORMANCE

CONDITIONS

HOT

WARM

VARIABLE

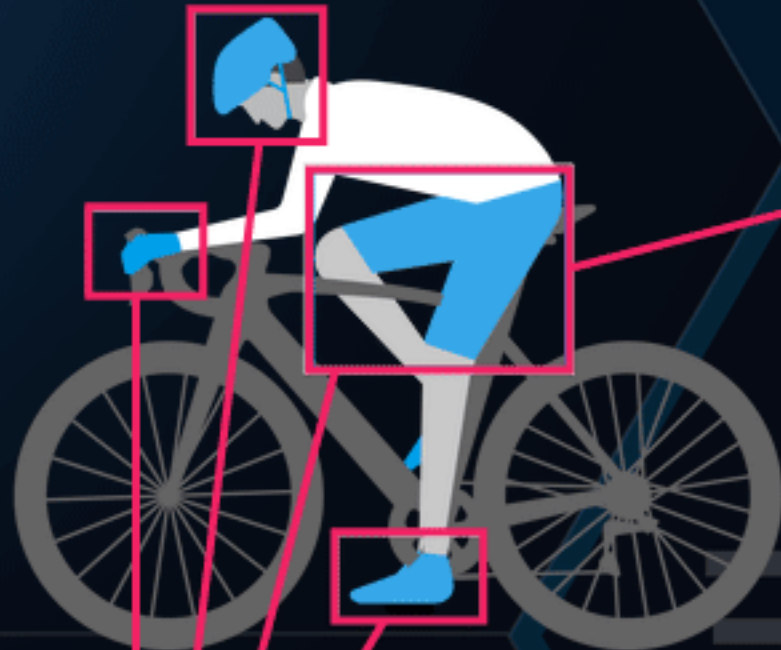
15°C/59°F~10°C/50°F
10°C/50°F~5°C/41°F

COOL
5°C/41°F~0°C/32°F

COLD
0°C/32°F~-5°C/23°F

5 BODY ZONES

FABRIC TECHNOLOGIES



accessory

ZONE 4

S-PHYRE BIB SHORT

S-PHYRE LEG WARMER

layer 1

layer 2

layer 3

S-PHYRE BASE LAYER

S-PHYRE WIND VEST

S-PHYRE ARM WARMER

S-PHYRE LEG WARMER

You can tap here and check the product

HELP

reset

COLLECTIONS

S-PHYRE

PERFORMANCE

CONDITIONS

HOT

WARM

VARIABLE

15°C/59°F~10°C/50°F
10°C/50°F~5°C/41°F

COOL
5°C/41°F~0°C/32°F

COLD
0°C/32°F~-5°C/23°F



accessory

ZONE 5



S-PHYRE TOE SHOE COVER

layer 1



BASE LAYER

layer 2



S-PHYRE SHORT SLEEVE JERSEY

ARM WARMER

LEG WARMER

layer 3



S-PHYRE WIND VEST

You can tap here to check "5 BODYZONES" & "FABRIC TECHNOLOGIES" page.

5 BODY ZONES

FABRIC TECHNOLOGIES

SHIMANO DYNAMIC LAYERING FOR 5 BODY ZONES

SHIMANO FUSION CONCEPT's Dynamic Layering combines our extensive knowledge of the rider's experience with our systems engineering philosophy to build apparel that works for riders across all weather conditions, intensity levels and e

Tap here to back.



THE 5 BODY ZONES	-10°C/14°F	-5°C/23°F	0°C/32°F	5°C/41°F	10°C/50°F	15°C/59°F
	COLD	COOL	COOL	COOL	VARIABLE	VARIABLE
HEAD: COMMAND CENTER	ZONE 1	EXTREME WINTER CAP	WINDBREAK SKULL CAP	THERMAL SKULL CAP	THERMAL HEADBAND	
TORSO: POWER GENERATION	ZONE 2	LONG SLEEVE BASELAYER + LONG SLEEVE THERMAL JERSEY + THERMAL WIND JACKET	LONG SLEEVE BASELAYER + THERMAL WIND JERSEY	LONG SLEEVE BASELAYER + LONG SLEEVE THERMAL JERSEY	SHORT SLEEVE BASELAYER + SHORT SLEEVE THERMAL JERSEY + WIND VEST + ARM WARMER	
HANDS: CONTROL CENTER	ZONE 3	HEAVY GLOVE	MEDIUM GLOVE	THIN GLOVE		
LOWER BODY: DRIVE	ZONE 4	WIND BIB TIGHT OR WIND TIGHT	THERMAL BIB TIGHT OR THERMAL TIGHT OR THERMAL BIB SHORT + LEG WARMER	THERMAL BIB 3/4 OR THERMAL BIB SHORT + KNEE WARMER		
FEET: POWER TRANSFER	ZONE 5	HEAVY SHOE COVER	GAITER	MEDIUM SHOE COVER	THIN SHOE COVER	TOE COVER

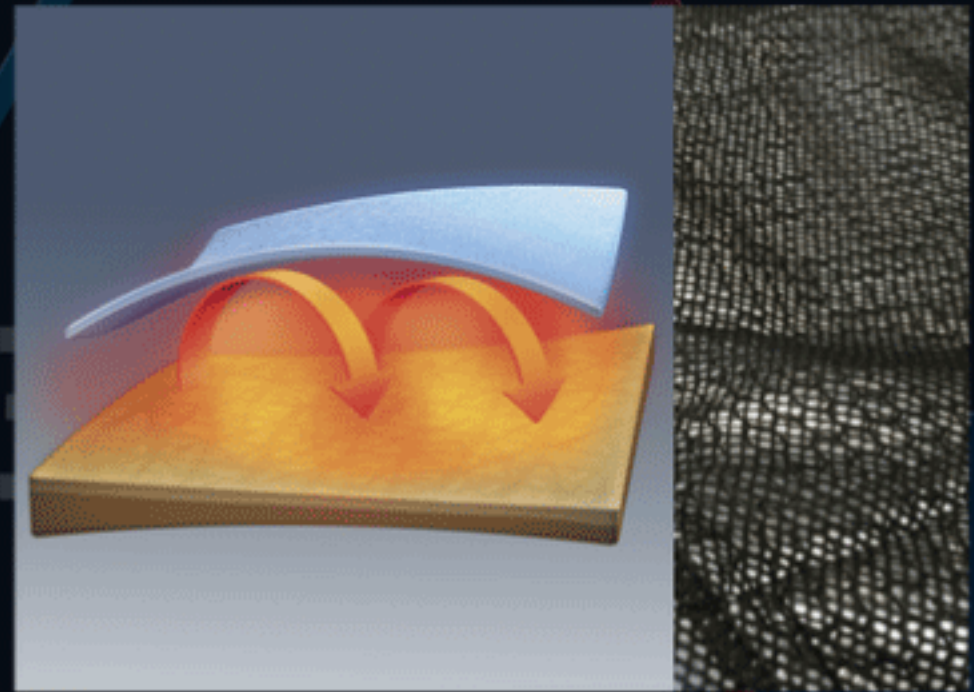
Tap these buttons to change page.

- DRYSHIELD®
- NEXT GENERATION METALLIC THERMAL TECH**
- SOFT SHELL
- NEW ULTRA-DURABLE 80/20 PREMIUM WATER-REPELLENT COATING
- WIND-BLOCKING FABRICS
- BREATH HYPER

NEXT GENERATION METALLIC THERMAL TECH

Next Generation METALLIC THERMAL TECH's larger surface area works to reflect infrared radiation released by the body. That radiation in turn warms up the layer of air between the fabric and the skin, helping to keep the temperature inside the clothing warm and comfortable. The new soft-textured surface also helps prevent the fabric from clinging to the skin.

37°C
TEMPERATURE
REGULATION





Tap this button to back.

DRYSHIELD®

NEXT GENERATION
METALLIC THERMAL TECH

SOFT SHELL

NEW ULTRA-DURABLE 80/20
PREMIUM WATER-REPELLENT COATING

WIND-BLOCKING FABRICS

BREATH HYPER

DRYSHIELD®

DRYSHIELD® boasts two essential properties that help to maximize cyclist comfort. First, it's waterproof to prevent rain and splashes from permeating the fabric. And second, it's breathable so that moisture from perspiration can be effectively released. Stringently tested in realistic wet weather conditions, DRYSHIELD® lets you ride in the rain without the discomfort of accumulated sweat. Stay dry and comfortable when the weather turns bad.

